



careismatic
brands

Key Medical Pte. Ltd.
Authorized Distributor
for Cherokee Scrubs

63 Hillview Avenue, 08-04A Lam Soon Industrial Building, Singapore 669569
Tel: 65-8893 0190 Email: sg@keymedical.asia



Product Catalogue 2025-2026

TOP - WW REVOLUTION WOMEN'S



WW620



Product Details

A Modern Classic fit V-neck top features patch pockets, an instrument loop, pencil stitch, logo label with bungee loop, back princess seams, and side vents. Center back length: 27"

Material: 78% Polyester/ 20% Rayon / 2% Spandex Twill

Sizes: XS-S-M-L-5XL

Available Colours

| | | | | |
|-----|-----|-------|------|-----|
| BLK | CAR | CIE | EEPI | EGG |
| GAB | GRP | GRY | HUN | KAK |
| NAV | OLV | PUFR* | PWT | RED |
| ROY | TLB | TRQ | WHT | WIN |



WW610



Product Details

A Modern Classic fit mock wrap top features front shoulder yokes, two patch pockets, instrument loop, logo label with bungee loop, front and back princess seams and side vents. Center back length: 26"

Material: 78% Polyester/ 20% Rayon / 2% Spandex Twill

Sizes: XXS-S-M-L-6XL

Available Colours

| | | | | |
|-----|-----|-----|------|-----|
| BLK | CAR | CIE | EEPI | EGG |
| GAB | GRP | GRY | HUN | KAK |
| NAV | OLV | PWT | RED | ROY |
| TLB | TRQ | WHT | WIN | |

TOP - WW REVOLUTION WOMEN'S



WW612



Product Details

This petite length V-neck top features front and back princess seams, elastic instrument loops on the wearer's right and a shirttail hem. The top also includes two roomy front inset pockets. Modern Classic fit. Center back length: 24"

Material: 78% Polyester/ 20% Rayon / 2% Spandex Twill

Sizes: XXS-S-M-L-3XL

Available Colours



WW601



Product Details

Add a sporty twist to your medical wardrobe with this soft shaped V-neck top with two patch pockets and instrument loops. A breathable mesh is featured on the neckband and side panels for extra comfort and mobility. Modern Classic fit. Center back length: 26

Material: 78% Polyester/ 20% Rayon / 2% Spandex Twill

Sizes: XXS-S-M-L-5XL

Available Colours



TOP - WW REVOLUTION WOMEN'S



WW2875



Product Details

This Modern Classic fit top features stretch side panels in contrast knit which shapes and slims the body. V-neck, front and back yoke seams and hidden kangaroo pocket with in-seam side entry. Center back length: 24 1/2"

Material: 78% Polyester/ 20% Rayon / 2% Spandex Twill

Sizes: XXS-S-M-L-5XL

Available Colours



TOP - INFINITY WOMEN'S



2625A



Product Details

A Contemporary fit mock wrap top features two set-in front pockets, a logo O-ring above left pocket, left scissor pocket, one interior pocket, front and back princess seams, and side vents. Stretch rib knit at the center back panel gives this top its slimming shape and allows for extra movement and comfort. Center back length: 26". The comfortable stretch poplin fabric and super stretchy rib knit is the perfect combo for healthcare professionals.

Material: 95% Polyester/ 5% Spandex Poplin

Sizes: XXS-S-M-L-5XL

Available Colours

| | | | | |
|------|------|------|------|------|
| BAPS | CAPS | CIPS | CPPS | EGG |
| GAB | GRP | GRY | HNPS | KAK |
| NYPS | OLPS | PWPS | RED | RYPS |
| TLPS | TRQ | WNPS | WTPS | |



2624A



Product Details

A Contemporary fit round neck top with a rib-knit inset at the front neckband also features shoulder yokes, a bungee ID badge loop on the right shoulder, front and back princess seams, two patch pockets, one interior pocket, and side vents. Stretch rib-knit at the center back panel gives this top its slimming shape and allows for extra movement and comfort. Coverstitch detail throughout. Center back length: 26". The comfortable stretch poplin fabric and super stretchy rib-knit is the perfect combo for healthcare professionals.

Material: 95% Polyester/ 5% Spandex Poplin

Sizes: XXS-S-M-L-5XL

Available Colours

| | | | | |
|------|------|-------|------|------|
| BAPS | CAPS | CIPS | CPPS | EGG |
| GAB | GRP | GRY | HNPS | KAK |
| NYPS | OLPS | PLIE* | PWPS | RED |
| RYPS | TLPS | TRQ | WNPS | WTPS |

TOP - INFINITY WOMEN'S



CK865A



Product Details

This chic V-neck top features a rib-knit insert at the front neck, a logo metal O-ring at the wearer's right shoulder, two welt pockets with a pencil stitch on left pocket, princess seams at front and back for a flattering slim shape and side vents. Contemporary fit. Center back length: 26"

Material: 95% Polyester/ 5% Spandex Poplin

Sizes: XXS-S-M-L-5XL

Available Colours



CK623A



Product Details

A Contemporary fit V-neck top features rib-knit waist insets and a stretchy rib-knit panel at the center back for a slenderizing effect, as well as for extra movement and comfort. Also featured are two patch pockets, an interior pocket, pencil stitch, bungee ID badge loop, front and back princess seams, a shirttail hem, side vents and coverstitch detail throughout. Center back length: 26". The comfortable stretch poplin fabric and super stretchy rib-knit is the perfect combo for healthcare professionals.

Material: 95% Polyester/ 5% Spandex Poplin

Sizes: XXS-S-M-L-5XL

Available Colours



TOP - INFINITY WOMEN'S



CK687A



Product Details

This Contemporary fit V-neck top has rib-knit insets at the neckline. Other features include front and back yoke seams plus front and back princess seams. There is a chest pocket on the wearer's left side. A center back rib-knit panel provides extra comfort and stretch. A shirttail hem and side vents complete the look. This style looks great tucked in or untucked. Center back length: 26"

Material: 95% Polyester/ 5% Spandex Poplin

Sizes: XXS-S-M-L-3XL

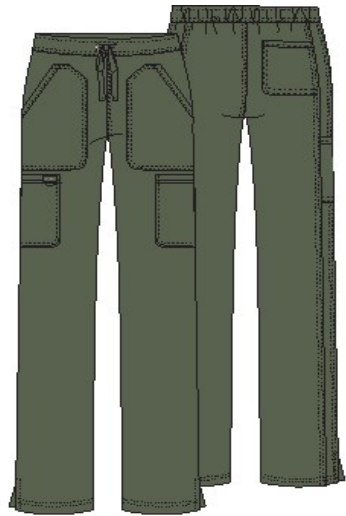
Available Colours



PANTS - WW REVOLUTION WOMEN'S



WW120



Product Details

A Modern Classic fit, mid rise, moderate flare leg pant features a functional drawstring and back elastic waistband. Also featured 5 pockets which is front patch pockets, two cargo pockets, a logo label with bungee loop, back pocket and side vents. Inseam: 31

Material: 78% Polyester/ 20% Rayon / 2% Spandex Twill
Sizes: XS-S-M-L-5XL

Available Colours

| | | | | |
|------|-----|------|------|------|
| BLK* | CAR | CIE | EEPI | EGG |
| GAB | GRP | GRY | HUN | KAK |
| NAV* | OLV | PWT* | RED | ROY* |
| TLB | TRQ | WHT | WIN* | |



WW105



Product Details

Mid rise tapered leg pant features pull-on styling with an elastic waistband and front drawstring closure. Additional design details include front angled pockets, a cargo pocket at wearer's right, and two back patch pockets. Modern Classic fit. Inseam: 31"

Material: 78% Polyester/ 20% Rayon / 2% Spandex Twill
Sizes: XXS-S-M-L-5XL

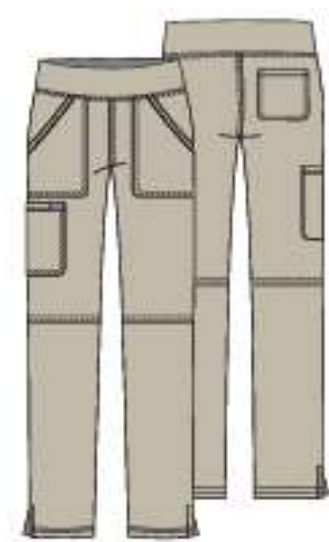
Available Colours

| | | | | |
|-----|-------|-----|-----|-----|
| BLK | CAR | CIE | EGG | HUN |
| NAV | PUFR* | PWT | RED | ROY |
| TLB | WHT | WIN | | |

PANTS - WW REVOLUTION WOMEN'S



WW110



Product Details

A Modern Classic fit, mid rise, straight leg pant features a comfort-fit knit waistband reinforced with inside elastic for extra support. Also featured are front patch pockets, a cargo pocket, logo label with bungee loop, back pocket, knee seams and side vents. Inseam: 31"

Material: 78% Polyester/ 20% Rayon / 2% Spandex Twill
Sizes: XXS-S-M-L-5XL

Available Colours

| | | | | |
|------|-----|------|------|------|
| BLK* | CAR | CIE* | EEPI | EGG |
| GAB | GRP | GRY | HUN | KAK |
| NAV* | OLV | PWT* | RED | ROY* |
| TLB | TRQ | WHT | WIN* | |

* [P] XXS-3XL



WW011



Product Details

Trendy and stylish, this natural rise jogger features breathable mesh on the elasticized waistband, two front patch pockets, cargo pocket, two back patch pockets and reflective instrument loops. Pant hem sits flat on front with elastic at the back for an easy glide-on fit. Curved back yoke and side seams complete the look. Modern Classic fit. Inseam: 29". Leg Opening 11"

Material: 78% Polyester/ 20% Rayon / 2% Spandex Twill
Sizes: XXS-S-M-L-5XL

Available Colours

| | | | | |
|-----|-----|-----|-----|-----|
| BLK | CAR | CIE | HUN | NAV |
| PWT | RED | ROY | TLB | WIN |

PANTS - INFINITY WOMEN'S



CK080A



Product Details

This Contemporary fit pull-on jogger has a rib-knit waistband with interior elastic and drawstring. There are six pockets: two front patch pockets, two cargo pockets, and two back welt zipper pockets. The jogger leg is finished with rib-knit cuffs. Tapered leg, 9" opening. Inseam: 28 1/2"

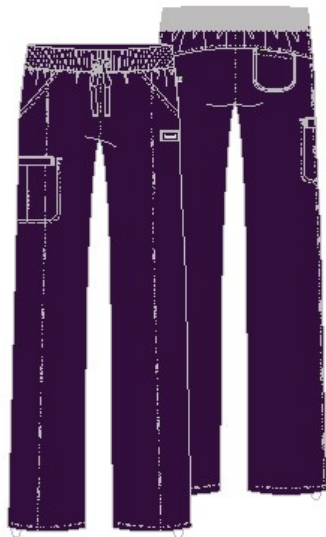
Material: 95% Polyester/ 5% Spandex Poplin
Sizes: XXS-S-M-L-5XL

Available Colours

| | | | | |
|------|------|------|-------|-------|
| BAPS | CAPS | CIPS | CPPS* | HNPS* |
| NYPS | PWPS | RYPS | TLPS | WNPS |



1123A



Product Details

A Contemporary fit, low rise, straight leg pant features an elastic knit waistband and adjustable drawstring. Also featured are rib knit front and back yokes, angled front pockets, front leg seams with a zip closure cargo pocket, one back patch pocket, a bungee instrument loop below left pocket, a bungee cord with a toggle at the leg hems for adjustability and coverstitch detail throughout. Inseam: 31" The comfortable stretch poplin fabric and super stretchy rib knit is the perfect combo for healthcare professionals.

Material: 95% Polyester/ 5% Spandex Poplin
Sizes: XXS-S-M-L-5XL

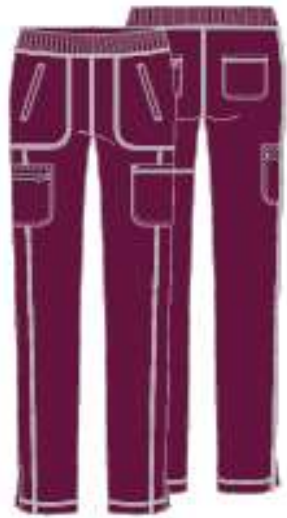
Available Colours

| | | | | |
|------|------|------|------|------|
| BAPS | CAPS | CIPS | CPPS | EGG |
| GAB | GRP | GRY | HNPS | KAK |
| NYPS | OLPS | PWPS | RED | RYPS |
| TLPS | TRQ | WNPS | WTPS | |

PANTS - INFINITY WOMEN'S



CK065A



Product Details

This mid rise tapered leg pant features pull-on styling with rib-knit waistband, front welt and cargo pockets, back patch pockets, and side vents at the hem for ease of movement. Contemporary fit. Leg opening: 14". Inseam: 30 1/2"

Material: 95% Polyester/ 5% Spandex Poplin

Sizes: XXS-S-M-L-5XL

Available Colours



TOP - WW REVOLUTION MEN'S



WW670



Product Details

A Men's Modern fit V-neck top features a chest pocket with pencil stitch, two patch pockets, a logo label with I.D. loop, back yoke and side vents. Center back length: 29"

Material: **78% Polyester/ 20% Rayon / 2% Spandex Twill**

Sizes: **XS-S-M-L-5XL**

Available Colours



WW690



Product Details

A Men's Modern fit V-neck top features a chest pocket with extra pen pocket, a back yoke and side vents. This style looks great tucked in or untucked. Center back length: 29"

Material: **78% Polyester/ 20% Rayon / 2% Spandex Twill**

Sizes: **XS-S-M-L-5XL**

Available Colours



TOP - WW REVOLUTION MEN'S



WW603



Product Details

This stylish Men's Modern fit V-neck top features a breathable mesh at the side seam panels, front and back shoulder panels for extra comfort and mobility. This top also features one front chest pocket, one front mobile pocket with a security zipper finished with reflective instrument loop. Center back length: 28 1/2"

Material: **78% Polyester/ 20% Rayon / 2% Spandex Twill**

Sizes: **XS-S-M-L-5XL**

Available Colours



TOP - INFINITY MEN'S



CK900A



Product Details

A Men's Modern fit V-neck top features a chest pocket with grommet detail, front welt pockets with triple-needle topstitching, front and back yokes, and stretch rib knit back panels for extra comfort. Center back length: 29 1/2" . The comfortable stretch poplin fabric and super stretchy rib knit is the perfect combo for healthcare professionals.

Material: 95% Polyester/ 5% Spandex Poplin

Sizes: XS-S-M-L-5XL

Available Colours



CK910A



Product Details

A Men's Modern fit V-neck top features a chest pocket with zip closure for security, instrument loop on the left sleeve, front and back yokes with triple-needle topstitching, and stretch rib knit neckband and back panels for extra comfort. This style looks great tucked in or untucked. Center back length: 29 1/2". The comfortable stretch poplin fabric and super stretchy rib knit is the perfect combo for healthcare professionals.

Material: 95% Polyester/ 5% Spandex Poplin

Sizes: XS-S-M-L-5XL

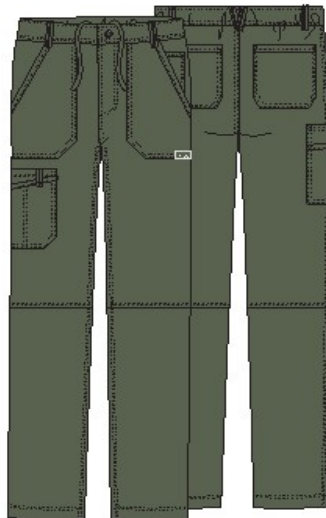
Available Colours



PANTS - WW REVOLUTION MEN'S



WW140

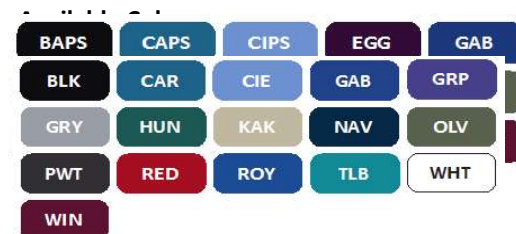


Product Details

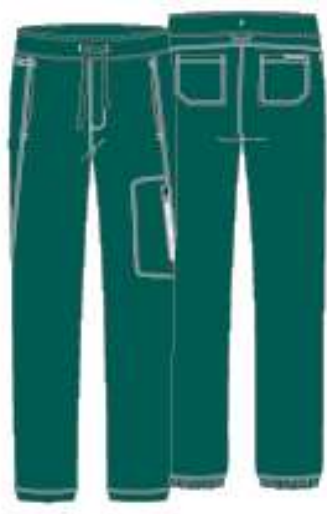
A Men's Modern fit tapered leg pant with a functional inside drawstring and back elastic waistband features five belt loops and a zip fly with button closure. Also featured are front patch pockets, a logo label with bungee loop, right double cargo pocket with snap I.D. loop, back patch pockets and knee seams. Inseam: 32"

Material: 78% Polyester/ 20% Rayon / 2% Spandex Twill

Sizes: XS-S-M-L-5XL



WW012



Product Details

A natural rise Men's Modern fit jogger pant features encased elastic waistband and a self drawstring. Detailing includes two front angled pockets with a breathable mesh lining, a security zip cargo pocket, two back patch pockets and reflective locker loop and instrument loop. Front hem is flat while back hem is encased in elastic for that active jogger look. Inseam: 31", Leg Opening: 12"

Material: 78% Polyester/ 20% Rayon / 2% Spandex Twill

Sizes: XS-S-M-L-5XL

Available Colours



PANTS - INFINITY MEN'S



CK200A



Product Details

A Men's Modern fit tapered leg pant features an inside functional drawstring, back elastic waistband with rib-knit, five belt loops, a zip fly with button closure and a hidden inseam gusset for extra ease. Also featured are two front angled pockets, a right double cargo pocket with bungee loop and grommet, left welt cargo pocket, back patch pocket and knee seams. Inseam: 32"

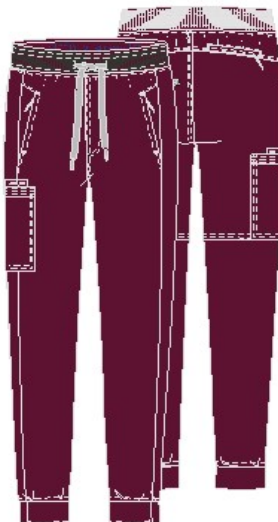
Material: 95% Polyester/ 5% Spandex Poplin

Sizes: XS-S-M-L-5XL

Available Colours



CK004A



Product Details

Stylish and super comfortable, this Men's Modern fit jogger features a mid rise, five pocket styling including three zip pockets to keep your items secure plus a cargo pocket with cell phone pocket, and rib knit cuff at back hem. As an added detail, the waistband offers a fun pop of color inside while remaining soft and comfortable on the skin. These joggers are a great piece that can transition from work to everyday life. Leg opening: 10 1/2". Inseam: 31". The comfortable stretch poplin fabric and super stretchy rib knit is the perfect combo for healthcare professionals.

Material: 95% Polyester/ 5% Spandex Poplin

Sizes: XS-S-M-L-5XL

Available Colours



WW REVOLUTION / INFINITY SIZE CHARTS



MEN'S MODERN FIT

CHEST

WAIST

HIPS

INSEAM

| Size (US) | Chest | Waist | Hips |
|-----------|-------|-------|-------|
| XS | 33-35 | 26-28 | 32-34 |
| S | 36-38 | 29-31 | 35-37 |
| M | 39-41 | 32-34 | 38-40 |
| L | 42-45 | 35-38 | 41-44 |
| XL | 46-49 | 39-41 | 45-48 |
| 2XL | 50-53 | 42-45 | 49-52 |
| 3XL | 54-57 | 46-49 | 53-56 |
| 4XL | 58-61 | 50-53 | 57-60 |
| 5XL | 62-65 | 54-57 | 61-64 |

HOW TO MEASURE

CHEST

Measure under the arms around the fullest part of the chest.

WAIST

Measure under the natural waistline, loosely holding the tape measure.

HIPS

Measure around the fullest part of the hips.

INSEAM

Measure along the inside of the leg, from just below the crotch to 1" below the ankle.

model is 6' 0" and is wearing size M top & bottom.



WOMEN'S MODERN CLASSIC FIT

BUST

WAIST

HIPS

INSEAM

| Size (US) | Bust | Waist | Hips |
|-------------|-------|-------|-------|
| XXS (0) | 33-34 | 25-26 | 34-35 |
| XS (2-4) | 35-36 | 27-28 | 36-37 |
| S (6-8) | 37-38 | 29-30 | 38-39 |
| M (10-12) | 39-41 | 31-33 | 40-42 |
| L (14-16) | 42-44 | 34-36 | 43-45 |
| XL (18-20) | 45-47 | 37-39 | 46-48 |
| 2XL (22-24) | 48-51 | 40-43 | 49-52 |
| 3XL (26-28) | 52-55 | 44-47 | 53-56 |
| 4XL (30-32) | 56-59 | 48-51 | 57-60 |
| 5XL (34-36) | 60-63 | 52-55 | 61-64 |

HOW TO MEASURE

BUST

Measure under the arms around the fullest part of the bust/chest.

WAIST

Measure under the natural waistline, loosely holding the tape measure.

HIPS

Measure around the fullest part of the hips.

INSEAM

Measure along the inside of the leg, from just below the crotch to 1" below the ankle.

model is 5' 9 1/2", wears a size 2 dress and is wearing size XS top & bottom.

CONTACT US AT: -



+65 8893 0190



sg@keymedical.asia



WhatsApp QR